

Han 10HvE-F-c

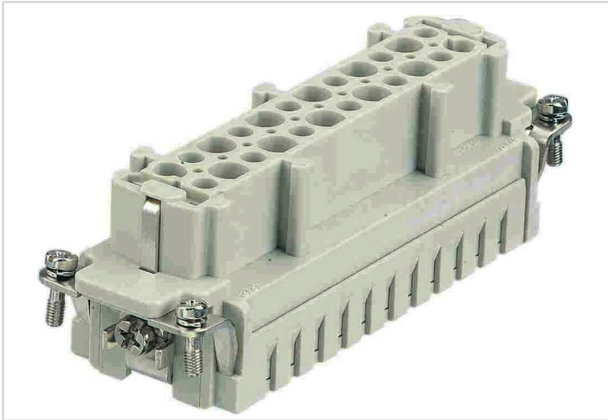


Image is for illustration purposes only. Please refer to product description.

Part number	09 34 010 2702
Specification	Han 10HvE-F-c
HARTING eCatalogue	https://b2b.harting.com/09340102702

Identification

Category	Inserts
Series	Han Hv E [®]

Version

Termination method	Crimp termination
Gender	Female
Size	24 B
Number of contacts	12
Number of power contacts	10
Number of special contacts	2
Specification of special contacts	Relay contact
PE contact	Yes
Details	Please order crimp contacts separately.

Technical characteristics

Conductor cross-section	0.5 ... 4 mm ²
Conductor cross-section	AWG 20 ... AWG 12
Rated current	16 A
Rated voltage	830 V
Rated impulse voltage	8 kV
Pollution degree	3
Rated voltage acc. to UL	600 V
Rated voltage acc. to CSA	600 V



Pushing Performance
Since 1945

Technical characteristics

Insulation resistance	>10 ¹⁰ Ω
Limiting temperature	-40 ... +125 °C
Mating cycles	≥500

Material properties

Material (insert)	Polycarbonate (PC)
Colour (insert)	RAL 7032 (pebble grey)
Material flammability class acc. to UL 94	V-0
RoHS	compliant
ELV status	compliant
China RoHS	e
REACH Annex XVII substances	Not contained
REACH ANNEX XIV substances	Not contained
REACH SVHC substances	Not contained
California Proposition 65 substances	Yes
California Proposition 65 substances	Lead Nickel
Fire protection on railway vehicles	EN 45545-2 (2020-08)
Requirement set with Hazard Levels	R26

Specifications and approvals

Specifications	IEC 60664-1 IEC 61984
UL / CSA	UL 1977 ECBT2.E235076

Commercial data

Packaging size	1
Net weight	77.7 g
Country of origin	Germany
European customs tariff number	85389099
GTIN	5713140053458
eCl@ss	27440205 Contact insert for industrial connectors